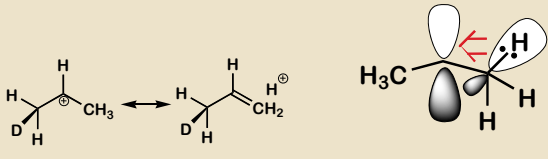
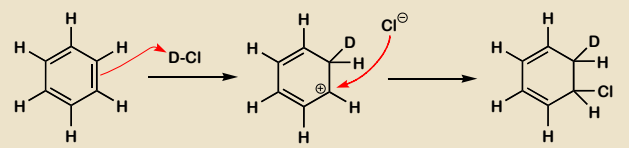


Electrophilic Substitution



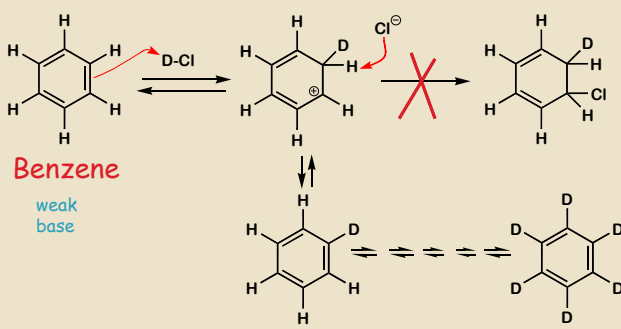
Hyperconjugation from the methyl gives stability to cation



A. This addition reaction is faster than the addition of HCl to propene

B. This addition reaction is slower than the addition of HCl to propene

C. This addition reaction does not happen.

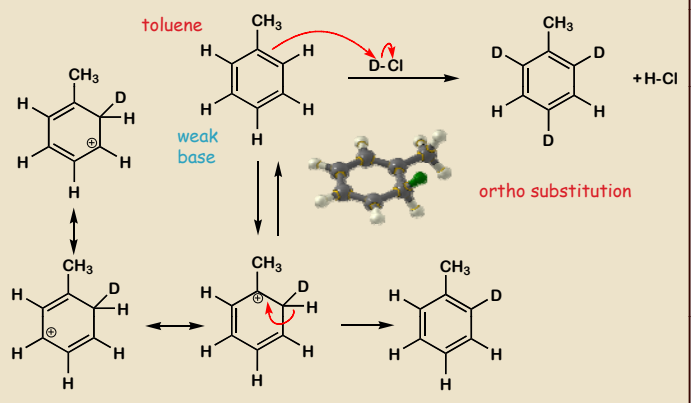


Benzene

weak base

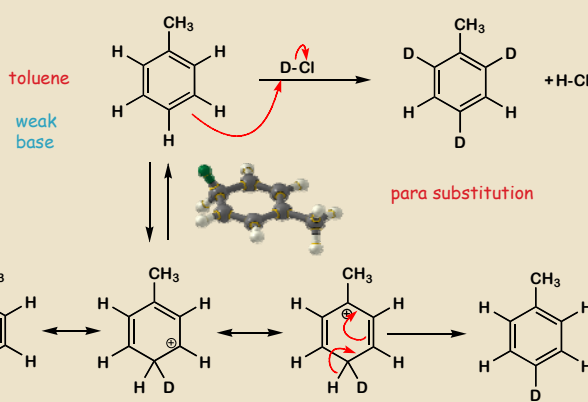
Electrophilic Aromatic Substitution

Aromatic substitution reactions



Hyperconjugation from the methyl gives stability to cation

Aromatic substitution reactions



Aromatic substitution reactions

