

 **Preview Assessment: Workshop 11 Part 1**

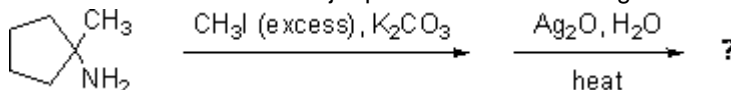
Name Workshop 11 Part 1

**Instructions****Multiple Attempts** This Test allows multiple attempts.**Force Completion** This Test can be saved and resumed later.▼ **Question Completion Status:****Question 1****1 points** [Save](#)

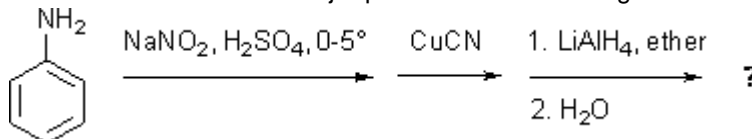
Draw the structure of N,N-diethylcyclohexylamine.

**Question 2****1 points** [Save](#)

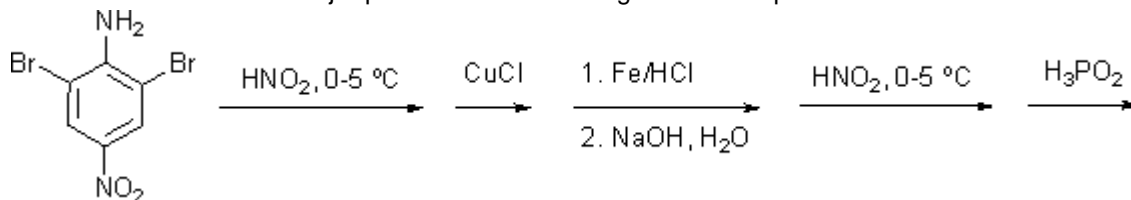
Draw the structure of the major product of the following reaction sequence:

**Question 3****1 points** [Save](#)

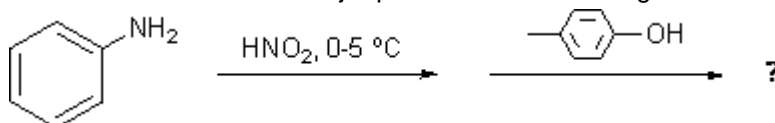
Draw the structure of the major product of the following reaction sequence:

**Question 4**

Draw the structure of the major product of the following reaction sequence:

**Question 5****1 points** [Save](#)

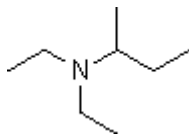
Draw the structure of the major product of the following reaction sequence:



## Question 6

1 points [Save](#)

Which is a correct common name for the following substance?

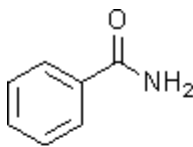
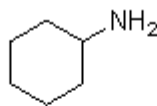
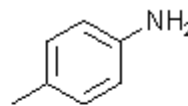
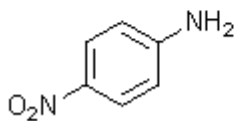
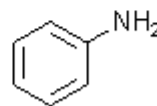


- Ethylethylisobutylamine  
 Diethylisobutylamine  
 sec-Butyldiethylamine  
 Ethylethyl-sec-butylamine  
 2-Diethylaminobutane

## Question 7

1 points [Save](#)

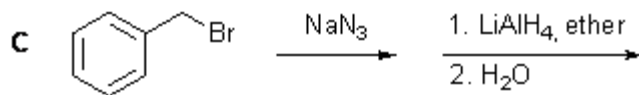
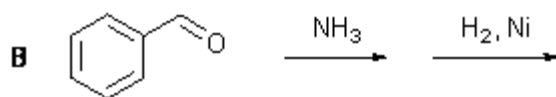
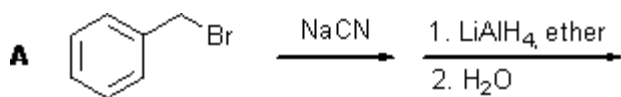
Which of the following compounds would be the strongest base?

**A****B****C****D****E**

- A  
 B  
 C  
 D  
 E

## Question 8

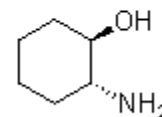
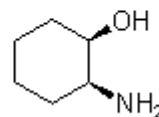
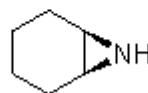
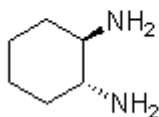
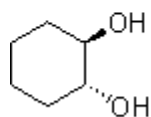
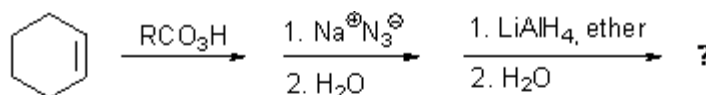
1 points [Save](#)Which of the following reactions would yield  $C_6H_5CH_2NH_2$ ?



- A  
 B  
 C  
 A and B  
 A and C  
 B and C  
 All of these

**Question 9****1 points**

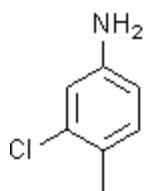
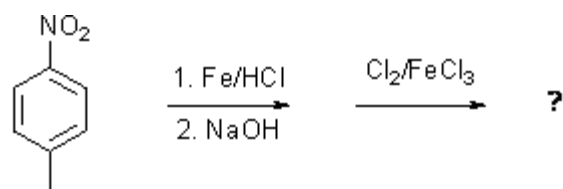
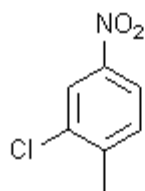
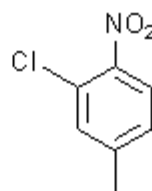
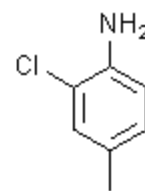
Predict the major product of the following reaction.



- A  
 B  
 C  
 D  
 E

**Question 10****1 points** [Save](#)

Predict the major product of the following reaction sequence.

**A****B****C****D**

- A  
 B  
 C  
 D

Save

Submit