

 **Preview Assessment: Workshop 11 Part 1**

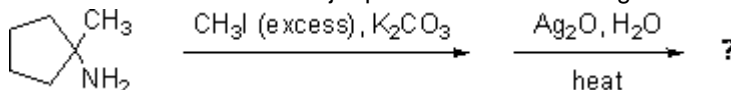
Name Workshop 11 Part 1

Instructions**Multiple Attempts** This Test allows multiple attempts.**Force Completion** This Test can be saved and resumed later.▼ **Question Completion Status:****Question 1****1 points** [Save](#)

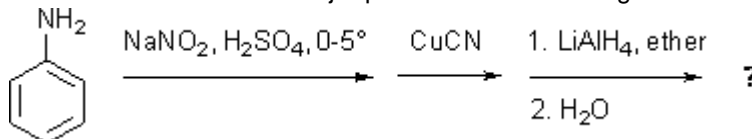
Draw the structure of N,N-diethylcyclohexylamine.

**Question 2****1 points** [Save](#)

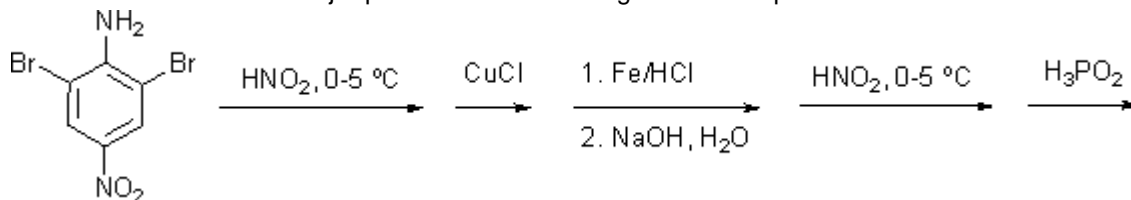
Draw the structure of the major product of the following reaction sequence:

**Question 3****1 points** [Save](#)

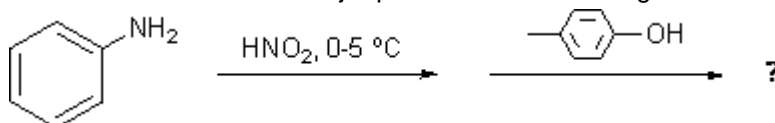
Draw the structure of the major product of the following reaction sequence:

**Question 4**

Draw the structure of the major product of the following reaction sequence:

**Question 5****1 points** [Save](#)

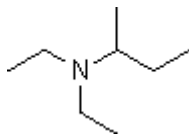
Draw the structure of the major product of the following reaction sequence:



Question 6

1 points [Save](#)

Which is a correct common name for the following substance?

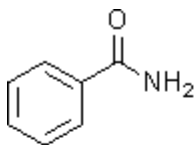
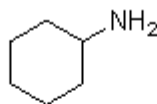
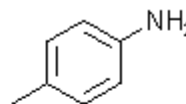
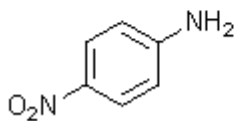
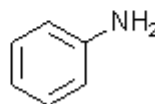


- Ethylethylisobutylamine
 Diethylisobutylamine
 sec-Butyldiethylamine
 Ethylethyl-sec-butylamine
 2-Diethylaminobutane

Question 7

1 points [Save](#)

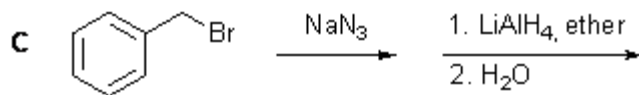
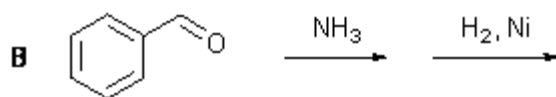
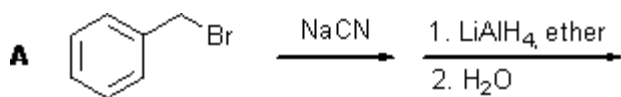
Which of the following compounds would be the strongest base?

**A****B****C****D****E**

- A
 B
 C
 D
 E

Question 8

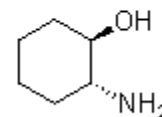
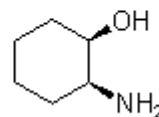
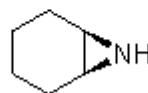
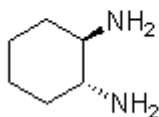
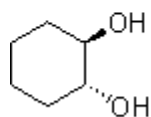
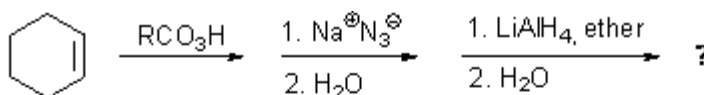
1 points [Save](#)Which of the following reactions would yield $C_6H_5CH_2NH_2$?



- A
 B
 C
 A and B
 A and C
 B and C
 All of these

Question 9**1 points**

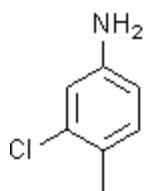
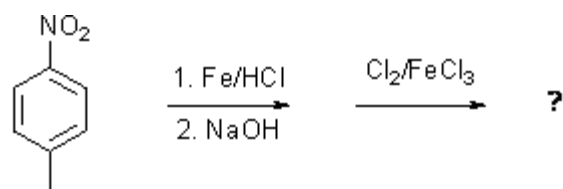
Predict the major product of the following reaction.



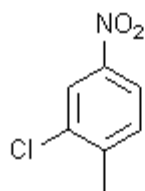
- A
 B
 C
 D
 E

Question 10**1 points** [Save](#)

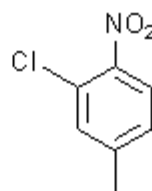
Predict the major product of the following reaction sequence.



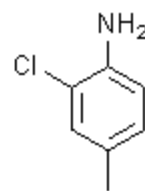
A



B



C



D

- A
 B
 C
 D

Save

Submit