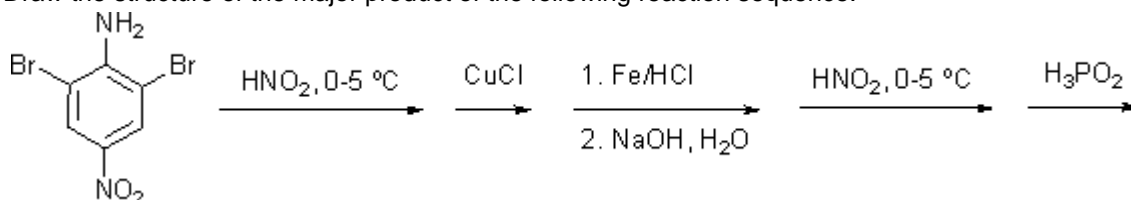


 **Preview Assessment: 326WS12 Part1**

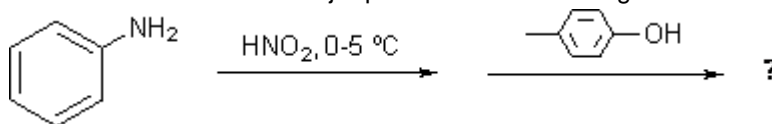
Name 326WS12 Part1

**Instructions****Multiple Attempts** This Test allows multiple attempts.**Force Completion** This Test can be saved and resumed later.▼ **Question Completion Status:****Question 1**

Draw the structure of the major product of the following reaction sequence:

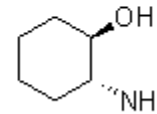
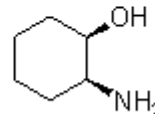
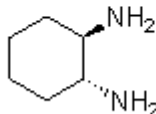
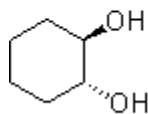
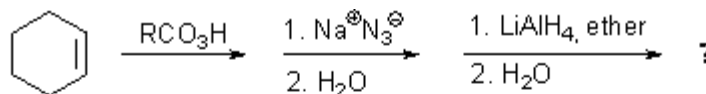
**Question 2**1 points [Save](#)

Draw the structure of the major product of the following reaction sequence:

**Question 3**

1 points

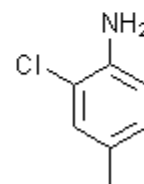
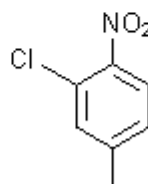
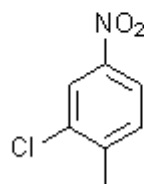
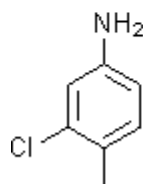
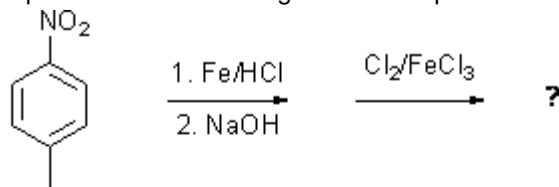
Predict the major product of the following reaction.

 i ii iii

- iv  
 v

**Question 4**1 points [Save](#)

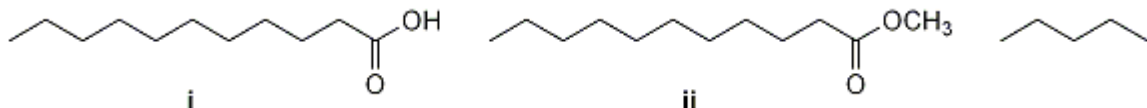
Predict the major product of the following reaction sequence.



- i  
 ii  
 iii  
 iv

**Question 5**

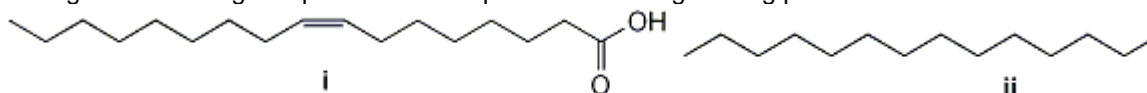
Arrange the following compounds with respect to increasing solubility in water.



- i < ii < iii  
 i < iii < ii  
 ii < i < iii  
 ii < iii < i  
 iii < ii < i  
 iii < i < ii

**Question 6**

Arrange the following compounds with respect to increasing melting point.



- i < ii < iii
- i < iii < ii
- ii < i < iii
- ii < iii < i
- iii < ii < i
- iii < i < ii

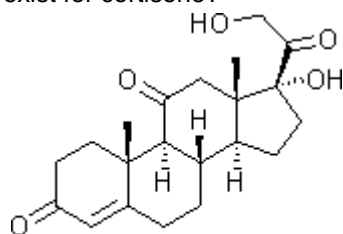
**Question 7****1 points** [Save](#)

Which of the following statements regarding lipids is **not** true?

- Lipids are soluble in non-polar organic solvents.
- All lipids have the same functional groups.
- Lipids include waxes, steroids, and triacylglycerols.
- Lipids have little in common except their solubility.
- Many lipids have biological roles.

**Question 8****1 points** [Save](#)

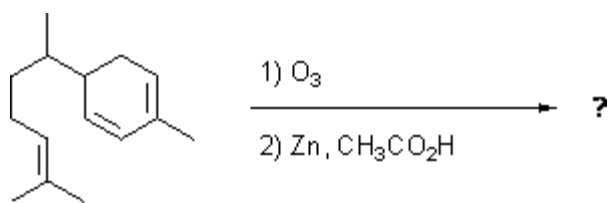
Cortisone, a kind of steroids, is also a member of lipids. How many stereoisomers can exist for cortisone?

**Cortisone**

- 4
- 8
- 16
- 32
- 64
- 128

**Question 9****1 points** [Save](#)

Draw the structure(s) of the product(s) of the ozonolysis of zingiberine, which can be found in the oil of ginger. (Note: If there is more than one product, draw all the structures in the same MarvinSketch window and then obtain the SMILES.)

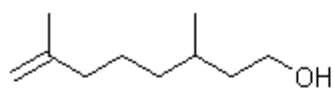


**Zingiberine**

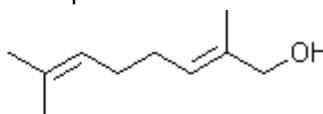
**Question 10**

1 points [Save](#)

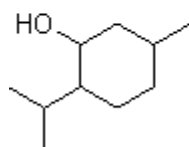
Which compound below does **not** obey the isoprene rule?



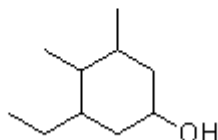
**i**



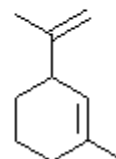
**ii**



**iii**



**iv**



**v**

- i
- ii
- iii
- iv
- v

Save

Submit