

-CHE 326.01 (R01-R07) ORGANIC CHEMISTRY IIB - SPRING 2009 (1094-CHE-326-SEC01-49422) > CONTROL PANEL > PREVIEW ASSESSMENT: 326 WS13 PART 1

Preview Assessment: 326 WS13 Part 1

Name 326 WS13 Part 1

Instructions

Multiple Attempts This Test allows multiple attempts.

Force Completion This Test can be saved and resumed later.

▼ Question Completion Status:

Question 1

1 points [Save](#)

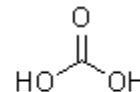
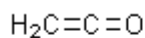
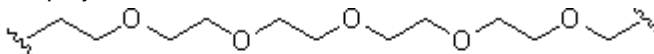
Which of the following is **not** a polymer?

- Natural rubber.
- Glucose
- DNA
- Nylon
- Starch

Question 2

1 points [Save](#)

Choose the monomer that could be used to prepare the following polymer by anionic chain growth polymerization?



A

B

C

D

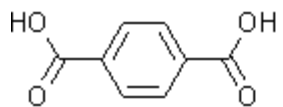
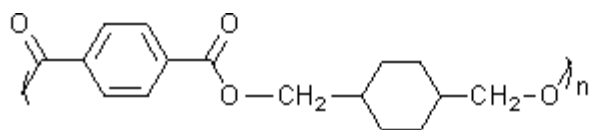
E

- A
- B
- C
- D
- E

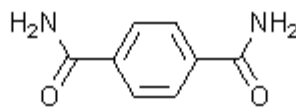
Question 3

1 point

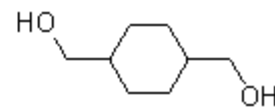
Choose the monomers that could be used to prepare the following step growth polymerization?



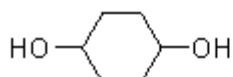
i



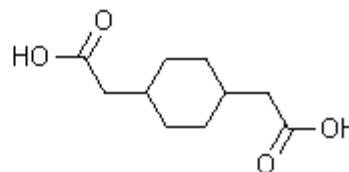
ii



iii



iv

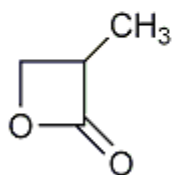
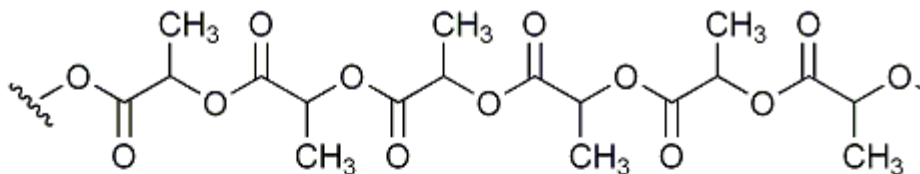


v

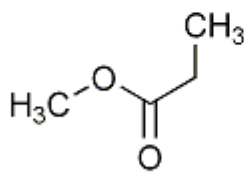
- i and iv
- ii and iii
- i and iii
- ii and iv
- iii and v

Question 4

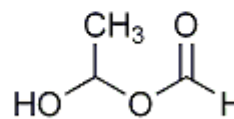
Choose the monomers that could be used to prepare the following step growth polymer?



A



B



C

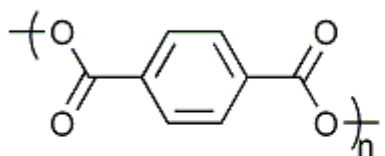
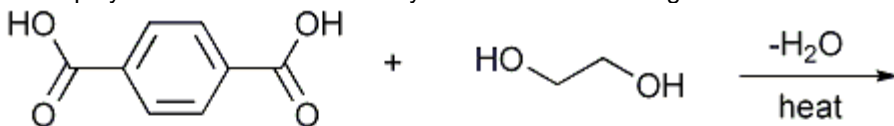
H₂

- A

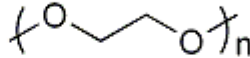
- B
- C
- D
- E

Question 5

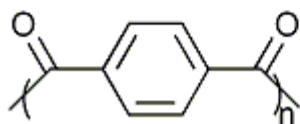
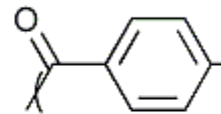
What is the structure of the polymer that results from dehydration of the following reactants?



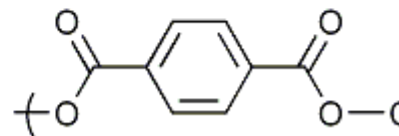
A



B



D



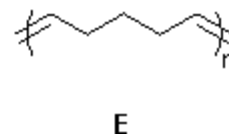
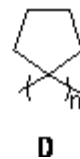
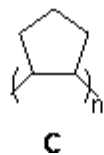
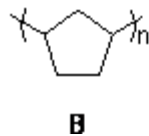
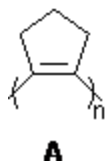
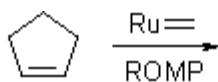
E

- A
- B
- C
- D
- E

Question 6

1 points

Choose the structure of the polymer produced by the ring opening metathesis polymerization (ROMP) using a ruthenium carbene complex.

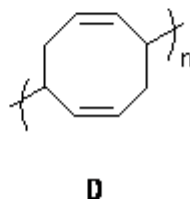
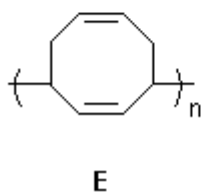
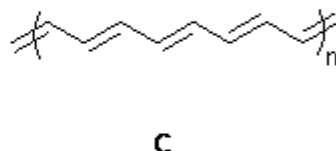
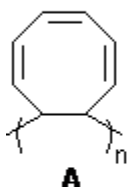
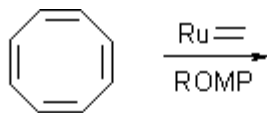


- A
- B
- C
- D
- E

Question 7

1 points [Save](#)

Choose the structure of the polymer produced by the ring opening metathesis polymerization (ROMP) using a ruthenium carbene complex.

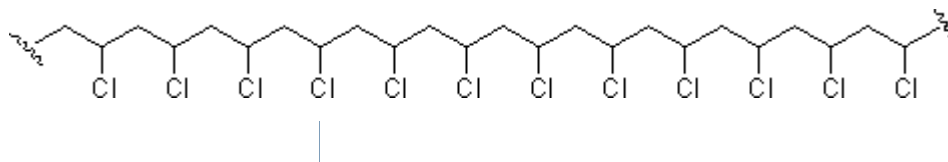


- A
- B
- C
- D
- E

Question 8

1 points Save

Draw the structure of the monomer that could be used to prepare the following polymer by radical chain growth (addition) polymerization.



Question 9

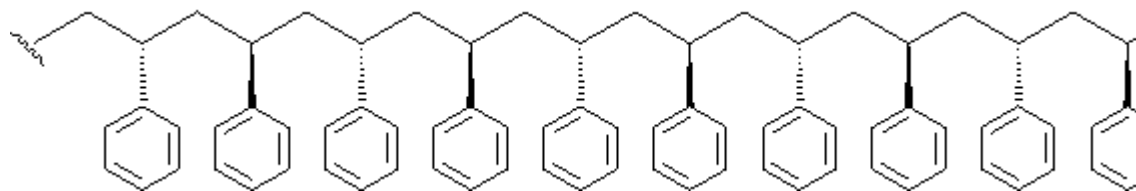
1 points Save

Draw the structure of the monomer that could be used to prepare the following polymer by opening metathesis polymerization (ROMP).



Question 10

The stereochemistry of polymers is important and the large number of stereocenters makes it more complicated than that of small molecules. Polymers with identical configurations (i.e. R or S) at all stereocenters are called isotactic polymers. Those with alternating configurations are called syndiotactic polymers, and those with completely random configurations are called atactic polymers. What is the stereochemistry of the following polymer?



- Isotactic.
- Syndiotactic
- Atactic
- Achiral

Save

Submit