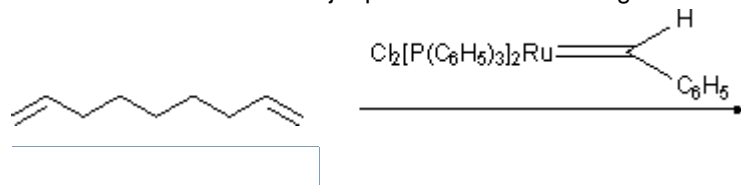


 **Preview Assessment: 326WS5**

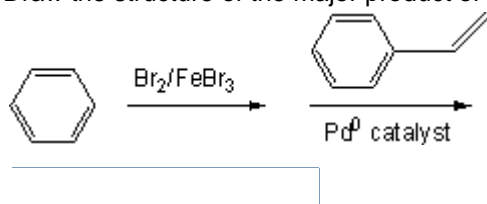
Name 326WS5

Instructions**Multiple Attempts** This Test allows multiple attempts.**Force Completion** This Test can be saved and resumed later.▼ **Question Completion Status:****Question 1****1 points** [Save](#)

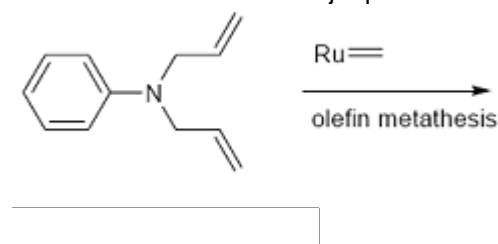
Draw the structure of the major product of the following reaction sequence:

**Question 2****1 points** [Save](#)

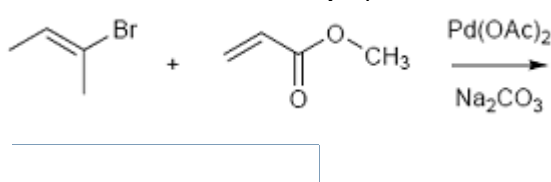
Draw the structure of the major product of the following reaction sequence:

**Question 3****1 points** [Save](#)

Draw the structure of the major product of the following reaction sequence:

**Question 4****1 points** [Save](#)

Draw the structure of the major product of the following reaction sequence:

**Question 5****1 points** [Save](#)What is the number of valence electrons for ferrocene $\text{Fe}(\text{C}_5\text{H}_5)_2$?

- 12
- 14
- 16
- 18
- 20

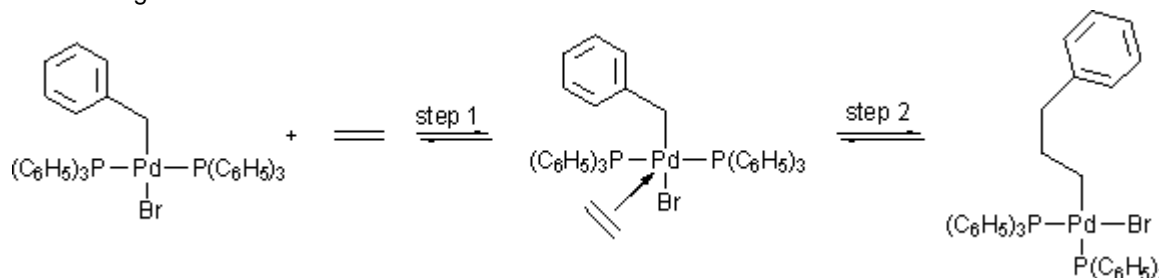
Question 6**1 points** Save

What is the number of valence electrons for the Wilkinson's catalyst $\text{RhCl}[\text{P}(\text{C}_6\text{H}_5)_3]_3$?

- 12
- 14
- 16
- 18
- 20

Question 7**1**

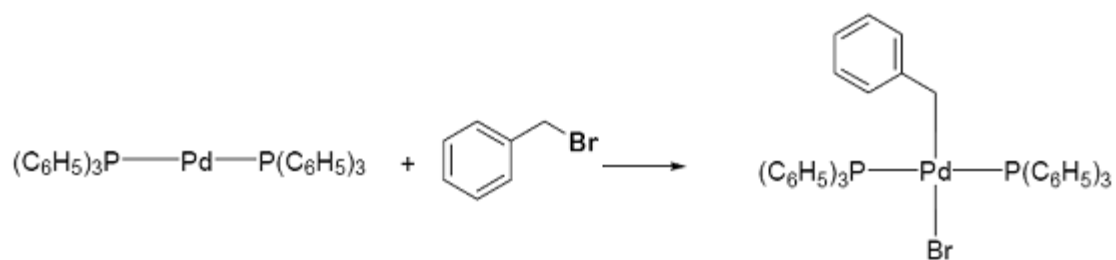
Organometallic reactions can be classified into fundamental reaction types. Classify the two steps of the following reaction.



- step 1 - Ligand association; step 2 - Ligand dissociation
- step 1 - Ligand association; step 2 - Ligand insertion
- step 1 - Ligand insertion; step 2 - Ligand dissociation
- step 1 - Oxidative addition; step 2 - Ligand dissociation
- step 1 - Oxidative addition; step 2 - Reductive elimination

Question 8**1 poi**

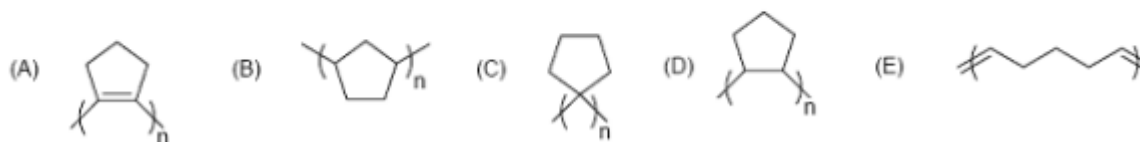
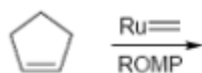
Organometallic reactions can be classified into fundamental reaction types. Classify the following reaction.



- Ligand association
- Ligand insertion
- Ligand dissociation
- Reductive elimination
- Oxidative addition

Question 9

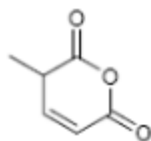
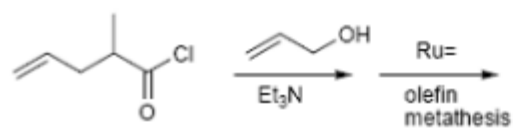
Choose the structure of the polymer produced by the ring opening metathesis reaction (ROMP) using ruthenium carbene complex.



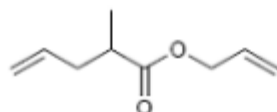
- A
- B
- C
- D
- E

Question 10

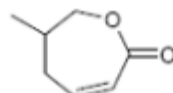
Choose the major product of the following reaction.



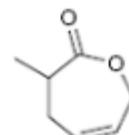
A



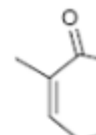
B



C



D



E

- A
- B
- C
- D
- E

Save

Submit